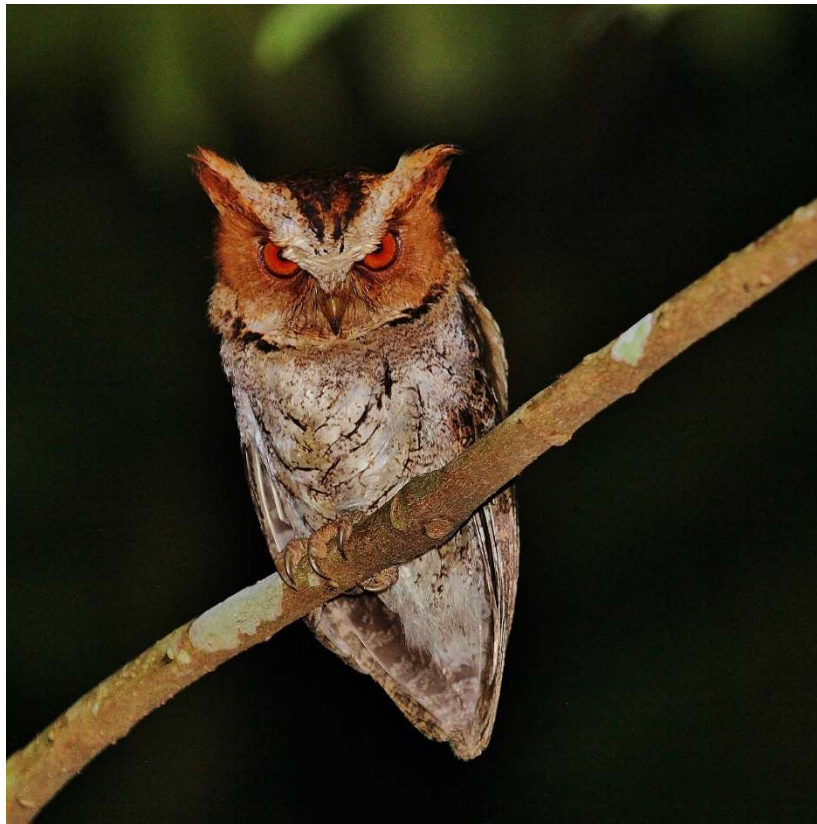


# PHILIPPINES HIGHLIGHTS

MARCH 1-19, 2021

©2020



The Negros Scops-Owl,  
one of many beautiful Philippine endemic night birds © Dion Hobcroft

*The geographic location and geological history of this amazing country has conspired to create a suite of fascinating endemic species—birds, mammals, reptiles and plants. Wedged between China, Japan, Malaysia and Indonesia and consisting of over 7,000 islands, successive invasions from different biogeographic zones and a complex geography in the Philippines have led to an adaptive radiation of a myriad of species. Many species in the Philippines have been subject to taxonomic review in recent years with a huge amount of splitting taking place. Of the almost 600 bird species in the islands, an extraordinary 290 or more species are endemic or very close to it. Putting it simply, with names such as Scale-feathered Malkoha, Chocolate Boobook, Visayan Hornbill and Palawan Peacock-Pheasant, the birds of the Philippines are without doubt some of the most exciting in the world!*



*Birding near Manila gives us an excellent introduction to the birds of Luzon. We will explore five major sites—Mount Makiling, Candaba Marshes, La Mesa Ecopark, Infanta and Subic Bay—which are home to some 60 endemics. Philippine Duck, Spotted Buttonquail, Philippine Hawk-Eagle, Philippine Serpent-Eagle, Philippine Falconet, Plain Bush-hen, Philippine Swamphen, Luzon Bleeding-Heart, White-eared Brown-dove, Black-chinned Fruit-Dove, Philippine Green-Pigeon, Guaiabero, Philippine Hanging-Parrot, Philippine Hawk-Cuckoo, Scale-feathered Malkoha, Red-crested Malkoha, Rufous Coucal, Philippine Scops-Owl, Luzon Hawk-Owl, Chocolate Boobook, Luzon Hornbill, Rufous Hornbill, Philippine Trogon, Spotted Kingfisher, Indigo-banded Kingfisher, Brown-breasted Kingfisher, Northern Sooty Woodpecker, Luzon Flameback, Philippine Woodpecker, Whiskered Pitta, Philippine Fairy-bluebird, Balicassiao, Blackish Cuckoo-shrike, White-lored Oriole, Elegant Tit, White-fronted Tit, Sulphur-billed Nuthatch, Stripe-headed Rhabdornis, Grand Rhabdornis, White-browed Shama, Ashy Ground-Thrush, Gray-backed and Trilling tailorbirds, Lemon-throated Leaf-Warbler, Yellow-bellied Whistler, Coletto, Flaming and Handsome sunbirds, and Buzzing and Striped flowerpeckers can all be found here.*

*We will travel to the beautiful island of Palawan, which forms a bridge between the main Philippine islands and Borneo. Palawan is home to some 20 or more endemics, depending on your taxonomy. St. Paul's National Park is beautifully located between high limestone cliffs and white sandy beaches and is covered by pristine forest. It is the home of the Underground River, a World Heritage site. We*

*will take a picturesque boat ride into the park, which is rich in birds including Tabon Scrubfowl; the stunning Palawan Peacock-Pheasant; Blue-naped Parrot; Blue-headed Racquet-tail; Palawan Hornbill; Great Slaty Woodpecker; Spot-throated Flameback; Red-headed Flameback; Hooded and Blue-breasted pitta; Yellow-throated Leafbird; Ashy-fronted, Sulphur-bellied and Palawan bulbul; Palawan Tit; Ashy-headed Babbler; Falcated Ground-Babbler; White-vented Shama; Palawan Blue-Flycatcher; Blue Paradise-Flycatcher; Lovely Sunbird; and Palawan Flowerpecker. In the evening, we will search for the Palawan Scops-Owl and the Palawan Frogmouth.*

*We will also visit two Visayan islands: Bohol and Negros, each offering unique bird species in accessible forests with comfortable hotels. Bohol offers quite a lot of species although many are at low density; possibilities include Samar Hornbill, Black-faced Coucal, both Northern Silvery and Rufous-lored kingfisher, the beautiful Philippine Trogon, sought after Azure-breasted Pitta, and rare Visayan Wattled Broadbill. Another beautiful island that offers excellent birding is Negros, home to the delightful Twin Lakes National Park, which protects what precious little remains of once extensive forests. Exploring these forests will give us the chance for another suite of special endemics. Negros Scops-Owl, Yellow-faced Flameback, Visayan Hornbill, White-winged Cuckoo-shrike, Visayan Bulbul, Visayan Drongo, Visayan Fantail, Flame-templed Babbler, Black-belted Flowerpecker, Maroon-naped and Magnificent sunbird are possible amidst a mix of more widespread species like Sulphur-billed Nuthatch, Elegant Tit, Mangrove Blue Flycatcher and White-vented Whistler.*

*This is a wonderful tour of a remarkable country with an amazing array of endemic birds. The pace is relatively relaxed; although there are a couple of long drives and obligatory early starts, we will enjoy very pleasant accommodation close to well-protected forests and delicious meals. Best of all, the birding is simply wonderful!*

*Please note that the order of the itinerary may be slightly rearranged to accommodate for revised internal flight schedules, to avoid conflicting with other groups, or due to other unforeseen factors.*



**A male Palawan Peacock-Pheasant © Dion Hobcroft**



**March 1-2, Days 1-2: Departure from Home; Arrival in Manila.** Most flights connecting from North America will arrive at Manila's *Ninoy Aquino International Airport* (airport code MNL) one or two days following your departure due to flight time and crossing the International Date Line. You will be met upon arrival by a representative of our ground agent and escorted to our hotel. We recommend flying in a day early due to potential misconnects and weather-related flight delays. Upon request, the VENT office will be happy to assist with any additional lodging arrangements. **The group will assemble at 7:00 p.m. on the evening of March 2.**

NIGHT (March 1): In transit, overnight flight  
NIGHT (March 2): Midas Hotel & Casino, Manila

**March 3, Day 3: Drive to Candaba Marsh; Afternoon Subic Bay.** We'll depart early this morning for Candaba Marsh, where we will spend three to four hours. This area is particularly good for the endemic Philippine Duck and Philippine Swamphe. There is also a large variety of more widespread Asian wetland and woodland birds like Little Grebe; Wandering Whistling-Duck; Purple Heron; Little, Great, Cattle and Intermediate egrets; Cinnamon, Yellow and Black bitterns; Common Moorhen; White-browed Crake; Barred Rail; White-breasted Waterhen; Eastern Marsh-Harrier; Black-winged Stilt; possibly wintering Pheasant-tailed Jacana; Kentish and Little Ringed plovers; Common and Wood sandpiper; Long-toed Stint; Oriental Pratincole; Whiskered Tern; Red Collared-Dove; Zebra Dove; Asian Koel; Lesser Coucal; Ameline Swiftlet; Common Kingfisher; Collared Kingfisher; Blue-tailed Bee-eater; Golden-bellied Gerygone; Striated Grassbird; Clamorous Reed-Warbler; Pied Bushchat; and possibly wintering Middendorf's Grasshopper-Warbler or White-shouldered Starling. There are still often a few wintering ducks from north Asia with Garganey being quite possible, with smaller numbers of Eurasian Wigeon, Northern Shoveler and Northern Pintail. Occasionally there are some rarer visitors.

Around 11:00 a.m., we'll proceed to Subic Bay. Subic Bay is an American naval base that was abandoned after Mount Pinatubo erupted in 1991 and covered the base with volcanic ash. We will spend the afternoon birding in the well-protected forests adjacent to the old Subic Naval Magazine. Here we can expect to see a variety of endemics or near endemics such as White-eared Brown-dove, Philippine Green-Pigeon, Guaiabero, Philippine Hanging-Parrot, Blue-naped Parrot, Green Racquet-tail, Red-crested Malkoha, Rufous Coucal, Philippine Coucal, Luzon Hornbill, Rufous-crowned Bee-eater, Brown-breasted Kingfisher, Luzon Flameback, Northern Sooty Woodpecker, Philippine Woodpecker, Blackish Cuckoo-shrike, Philippine Bulbul, Philippine Pied Fantail, Coledo, White-browed Shama, Trilling Tailorbird and with luck the scarce White-lored Oriole. More widespread species that occur at Subic include Red Junglefowl, Green Imperial-Pigeon, Dollarbird, Whiskered Treeswift, Coppersmith Barbet, White-bellied Woodpecker, White-breasted Woodswallow, Ashy Minivet, Bar-bellied Cuckoo-shrike, Yellow-vented Bulbul, Large-billed Crow, Barn and Pacific swallows, Arctic Warbler, Gray-streaked Flycatcher and Blue Rock-Thrush. At night we can search for Great Eared-Nightjar, Chocolate Boobook, Luzon Hawk-Owl and Philippine Scops-Owl. There is an enormous roost of two species of giant flying-foxes that sometimes attract the attention of White-bellied Sea-Eagles. Other possible raptors include the scarce Philippine Hawk-Eagle, widespread Brahmany Kite, migrant Chinese Goshawk and Gray-faced Buzzard, and the diminutive endemic Philippine Falconet.

NIGHT: Kamana Sanctuary, Subic

**March 4, Day 4: Birding at Subic Bay.** We will spend the day birding in Subic's forests along the trail to Hill 394 and the Nabasan Beach road searching for specialty birds. We will be planning a break in the middle of the day when bird activity largely ceases. Where possible, we will always schedule a siesta during the heat of the day on this tour.

NIGHT: Kamana Sanctuary, Subic

**March 5, Day 5: Morning Birding in Subic; Afternoon Return to Manila.** After a final morning's birding in Subic, we will head back towards Manila. If possible, we may detour via the Quezon City campus of the University of the Philippines where we have had some success on recent trips finding both Philippine Scops-Owl and Philippine Nightjar.

NIGHT: Midas Hotel & Casino, Manila

**March 6, Day 6: Flight to Palawan; Birding at St. Paul's National Park.** This morning we will catch a flight to Puerto Princesa on the island of Palawan. Before setting off to St. Paul's National Park, we will go to some coastal mangrove areas for a good chance to see the Copper-throated Sunbird, Common Iora and perhaps a variety of shorebirds with a chance for the rare Chinese Egret. We may also opt to visit the Crocodile Farm that has become the go-to site for a chance to see the ultra-shy Palawan Peacock-Pheasant. After lunch we will proceed to Sabang and St Paul's National Park. The drive in for the last 20 miles is good for birds and we will take our time, arriving at Sabang in the late afternoon. We have a good chance to see the critically endangered Philippine Cockatoo in this area. Other species, not endemic, that are possible include Crested Serpent-Eagle, Changeable Hawk-Eagle, Rufous-bellied Eagle, Green Imperial-Pigeon, Chestnut-breasted Malkoha, Plaintive Cuckoo, Brown-backed Needletail, Great Slaty Woodpecker, Hooded Pitta, Fiery Minivet and Dark-throated Oriole. In the evening, if people wish, we will search for the Palawan Scops-Owl and the Palawan Frogmouth.

NIGHT: Sheridan Beach Resort & Spa, Sabang

**March 7, Day 7: St. Paul's National Park.** Today we have all day in St Paul's National Park and the surrounding area around Sabang. The park is beautifully located between high limestone cliffs and white sandy beaches and is covered by pristine forest. It is the home of the Underground River and to save time, we will take a boat directly there (15 minutes). Please note it is a wet landing (so sandals are ideal) and the boat can be a bit noisy (ear plugs can be handy). The overall area is rich in birds and there is a good chance of seeing some of the following birds: Tabon Scrubfowl; Blue-naped Parrot; Blue-headed Racquet-tail; Red-headed and Spot-throated flamebacks; Palawan Swiftlet; Stork-billed and Ruddy kingfisher; Palawan Hornbill; Blue-breasted Pitta; Yellow-throated Leafbird; Ashy-fronted, Sulphur-bellied and Palawan bulbuls; Palawan Tit; Ashy-headed Babbler; Falcated Ground Babbler (difficult); White-vented Shama; Palawan Blue-Flycatcher; Blue Paradise-Flycatcher; Hill Myna; Lovely Sunbird; and Palawan Flowerpecker.

NIGHT: Sheridan Beach Resort & Spa, Sabang

**March 8, Day 8: St. Paul's National Park; Return to Puerto Princesa.** We have another morning at St. Paul's to search for any birds we may have missed. Later this afternoon, we will return to Puerto Princesa and in the afternoon visit some nearby rice fields and forest patches where we will search for Rufous Night-Heron, Swinhoe's Snipe and Watercock.

NIGHT: Legend Palawan, Puerto Princesa

**March 9, Day 9: Morning at Irawan; Afternoon Flight to Manila.** This morning we will visit Irawan and other nearby forests. Our target birds here include the skulking Melodious Babbler and the elusive Palawan Flycatcher. Other species we have encountered here include Square-tailed Drongo-Cuckoo, Greater Coucal, Rufous-backed Dwarf-Kingfisher, Blue-eared Kingfisher, Hair-crested Drongo, Black-naped Monarch, Slender-billed Crow, Black-headed Bulbul, Rufous-tailed Tailorbird and the Asian Glossy Starling. We'll enjoy a tasty lunch before catching our late afternoon flight back to Manila, where we will settle into the now familiar Midas Hotel.

NIGHT: Midas Hotel & Casino, Manila

**March 10, Day 10: Mount Makiling via La Mesa.** We will make the necessary early departure to visit the La Mesa Ecopark. This site has proven reliable in recent years to see the elusive Ashy Ground-Thrush. It is also quite good for the often shy Gray-backed Tailorbird, the occasional wintering Brown-headed Thrush, Philippine Magpie-Robin, Mangrove Blue Flycatcher, Lowland White-eye and if we are in luck, perhaps a Blue-breasted Pitta or Indigo-banded Kingfisher. After this we will head to Mount Makiling.

In the afternoon we will bird on the lower slopes of the mountain. This will include a visit to the Botanic Gardens where there are often some flowering and fruiting trees. Here we are looking for Red-keeled and Pygmy flowerpeckers, Indigo-banded Kingfisher, Scale-feathered Malkoha and Philippine Falconet. We can also visit the Dairy Husbandry section of the University of the Philippines campus for hopefully the endemic Spotted Buttonquail. Other birds we hope to see include Buff-banded Rail, Barred Button-quail, Philippine Serpent-Eagle, White-eared Brown-dove, Black-chinned Fruit-Dove, Philippine Cuckoo-Dove, Guaiabero, Philippine Hawk-Cuckoo, Rusty-breasted Cuckoo, Luzon Hornbill, Red-crested Malkoha, Asian Palm Swift, House Swift, Pygmy Swiftlet, Philippine Woodpecker, Striated Swallow, Yellow-wattled Bulbul, Balicassiao, Elegant Tit, Sulphur-billed Nuthatch, Stripe-headed Rhabdornis, White-browed Shama, Blue-headed Fantail, Yellow-bellied Whistler, Coletto, Flaming and Handsome sunbirds, and Buzzing and Striped flowerpeckers. We can search at night for Luzon Hawk-Owl, Philippine Scops-Owl and Philippine Nightjar.

NIGHT: SEARCA Hotel, Los Banos

**March 11, Day 11: Mount Makiling.** We have a full day of birding on Mount Makiling. In the morning we will be birding the higher slopes at about 1,500 feet above sea-level. We will take a jeepney from the bottom up to our start-off point and hike along forest trails until the forest becomes inactive as the day warms up. There are quite a few high-quality birds on this trail but they can be shy. With patience we hope to find Philippine Trogon, Spotted Kingfisher and with really good luck, the enigmatic Luzon Bleeding-heart. In the afternoon we will go wherever we think will most likely provide the best chance of new birds.

NIGHT: SEARCA Hotel, Los Banos



A beautiful male Spotted Kingfisher at Mount Makiling  
© Dion Hobcroft

**March 12, Day 12: Morning at Mount Makiling; Return to Manila.** A final morning at Mount Makiling will give us a chance to search for any of the forest birds we have not been able to see. We will then return to Manila.

NIGHT: Midas Hotel & Casino, Manila

**March 13, Day 13: Infanta.** Located in the Southern Sierra Madre mountains, Infanta gives access to some decent patches of montane rainforest and overlooks of well forested valleys. Like Mount Makiling, it can be slow birding here but a long list of rarely seen endemics make it a popular place for local birders, and overseas birders are following hot on their heels. Here we will be searching for Rufous Hornbill, Cream-bellied Fruit-Dove, Flame-breasted Fruit-Dove, Whiskered Pitta, Blue-headed Fantail, Sulphur-billed Nuthatch, Bicol Ground-warbler, Philippine Fairy-bluebird, Grand Rhabdornis and Flaming Sunbird. With patience, we hope to encounter some of these species.

NIGHT: Midas Hotel & Casino, Manila

**March 14, Day 14: Fly to Bohol; Rajah Sikatuna National Park.** We will take a morning flight to Bohol and then transfer to our comfortable hotel where we have a chance to see both the Northern Silvery Kingfisher and Pink-necked Green-Pigeon. We will spend the afternoon exploring Rajah Sikatuna National Park. The park offers chances to see a good cross-section of Philippine endemics and we hope to see Black-faced Coucal, Philippine Drongo-Cuckoo, Samar Hornbill, Rufous-lored Kingfisher, Philippine Trogon, Buff-spotted Flameback, Azure-breasted Pitta, Visayan Wattled Broadbill (rare), Visayan Blue Fantail, Philippine Fairy-bluebird, Yellow-breasted

Tailorbird, Rufous-fronted Tailorbird (both tailorbirds are remarkably shy), Philippine Leaf-Warbler, Brown Tit-Babbler, Rufous-tailed Jungle-Flycatcher, Yellow-bellied Whistler and Bohol Sunbird. Night birds include Everett's Scops-Owl, Luzon Hawk-Owl and Philippine Frogmouth. Please note that some trails in the forest interior can be rocky and slippery if it has been raining. We can offer forest edge birding if people do not feel comfortable birding in the forest interior. The great majority of sites we visit here are straight-forward for walking but there is one exception and it does offer the chance for some special birds.

NIGHT: Loboc River Resort, Loboc

**March 15, Day 15: Bohol.** We will have a whole day to track down all of the interesting birds in Bohol. We will schedule a visit to the Corella Tarsier Centre. Here we are pretty much guaranteed to see the amazing Philippine Tarsier at their day-roost in some fenced-off protected forest.

NIGHT: Loboc River Resort, Loboc

**March 16, Day 16: Ferry to Negros; Twin Lakes National Park.** In the morning we will catch a fast ferry to Dumaguete in eastern Negros. We will have an air-conditioned first-class seating arrangement and seas are typically flat so it is comfortable and efficient. Upon arrival we will check into the hotel and then proceed to the Twin Lakes National Park. While being paddled around the lovely volcanic lakes we will have a chance to see several special birds of this island including the beautiful but scarce Yellow-faced Flameback and the Visayan Hornbill. Other specific endemics at this site include Maroon-naped Sunbird, White-winged Cuckoo-shrike, Visayan Tailorbird, Visayan Bulbul, Visayan Fantail and Black-belted Flowerpecker. More widespread species include Sulphur-billed Nuthatch, Elegant Tit, Lemon-throated Leaf-Warbler, White-vented Whistler and Magnificent Sunbird. It is also possible to locate with some luck the Yellow-breasted Fruit-Dove, Amethyst Brown-Pigeon, Spotted Kingfisher, Blue-crowned Racquet-tail, and the now rare Pink-bellied Imperial-Pigeon. At night, if people wish, we will try and track down the very attractive Negros Scops-Owl. The national park with its lakes and forest is particularly photogenic.

NIGHT: Hotel Essencia, Dumaguete

**March 17, Day 17: Morning at Twin Lakes; Afternoon to Mount Talinis.** We will return in the morning to Twin Lakes. After hopefully cleaning up as much as possible here on our target list we will spend the afternoon at a geothermal plant at Mount Talinis. This gives us a rare opportunity to drive up to high altitude forest where there is a chance for the rarely encountered Negros Striped Babbler and more widely distributed Turquoise Flycatcher and Warbling White-eye.

NIGHT: Hotel Essencia, Dumaguete

**March 18, Day 18: Morning Negros; Afternoon fly to Manila.** A final morning of birding will be spent searching for the endemic Flame-templed Babbler. This tricky bird can sometimes respond quickly or be annoyingly difficult. It is typically associated with mixed species flocks. A good view will reveal the orange temple tufts that give this enigmatic bird its name. The forest here offers the chance to connect with any species we may have missed on this lovely island. After lunch we will retrace our steps and fly to Manila.

NIGHT: Midas Hotel & Casino, Manila

**March 19, Day 19: Departure for Home** Transfers to the airport will be provided for departures any time today.

**TOUR SIZE:** This tour will be limited to 8 participants.

**TOUR LEADER:** Dion Hobcroft



**TOUR LEADER:** **Dion Hobcroft** has been working for VENT since 2001. He has led many tours (more than 180) to Australia, New Guinea, New Zealand, Bhutan, Indonesia, India, China, Southwest Pacific, Philippines, Cambodia, Thailand, Malawi, Myanmar, Japan, Russia, Alaska, Tanzania, Uganda, Madagascar, Kazakhstan, Uzbekistan, and the Antarctic. In 2007 and 2013–2019 alone, Dion showed more than 2,000 species of birds to VENT clients. His informative, relaxed, and educational nature, combined with sharp eyes and ears, has established Dion as a favorite of many tour participants. His fieldwork for over 40 years on birds and other terrestrial vertebrates has allowed him to amass an extraordinary knowledge of the biodiversity in the Asia-Pacific region. Born in Tasmania and based in Sydney, Dion has traveled widely throughout Australasia, listing over 1,200 species, placing him in the top echelons of the region's birders. He is very tuned-in to the songs of bird species in the

Asia-Pacific region and specializes in rare and elusive species. He is delighted to show these skulking rarities to his travel companions. Dion has published several papers on field ornithology, served on national and state rare bird committees, managed *Birdline NSW*, run introduction to ornithology courses for Sydney University, and, before he traveled so continuously, was a popular speaker with various natural history societies. Dion has worked for many research and government agencies ranging from the Antarctic Division, Department of Environment NSW, Agriculture Protection WA, Taronga Zoo, Australian Museum, and the Queensland Department of Primary Industry. Dion lives in Sydney with his wife, Lise, and two children, Grace (age 19) and Daniel (age 15).

**FINANCIAL ARRANGEMENTS:** The fee for this tour is **\$7,525** in double occupancy from Manila. This includes all meals from dinner on Day 2 to breakfast on Day 19. The tour includes lodging as stated in the itinerary; all ground, air, and water transportation during the tours; and guide services provided by the tour leader. These tour fees do not include airfare from your home to Manila and return, airport departure taxes, alcoholic beverages, special gratuities, telephone calls, laundry or items of a personal nature. Rates are based upon group tariffs; if the tours do not have sufficient registration, a small party supplement may have to be charged.

The single supplement for this tour is **\$1,295**. You will be charged a single supplement if you desire single accommodations, or if you prefer to share but have no roommate and we cannot provide one for you.

**REGISTRATION & DEPOSIT:** To register for this tour, please contact the VENT office. The deposit for both the main tour and pre-trip is **\$1,000** per person. If you would like to pay your deposit using a credit card, the deposit must be made with MasterCard, Visa, or American Express at the time of registration. If you would like to pay your deposit by check, money order, or bank transfer, your tour space will be held for 10 days to allow time for the VENT office to receive your deposit and completed registration form. The VENT registration form (available from the VENT office or by download at [www.ventbird.com](http://www.ventbird.com)) should be completed, signed, and returned to the VENT office.

**PAYMENTS:** All tour payments may be made by credit card (MasterCard, Visa, American Express), check, money order, or bank transfer (contact the VENT office for bank transfer information). These include initial deposits, second deposits, interim payments, final balances, special arrangements, etc. Full payment of the tour fee is due 150 days (prior to the tour departure date (October 2, 2020)).

**CANCELLATION & REFUNDS:** Refunds are made according to the following schedule: If cancellation is made 180 days or more before the tour departure date, a cancellation fee of **\$500** per person will be charged unless the deposit is transferred to a new registration for another VENT tour that will operate within the next 12 months, in which case the cancellation fee will be **\$100** per person. If cancellation is made between 179 and 151 days before departure date, the deposit is not refundable, but any payments covering the balance of the fee will be refunded. If cancellation is made fewer than 150 days before departure date, no refund is available. This policy and fee schedule also applies to pre- and post-tour extensions. **For your protection, we strongly recommend the purchase of travel insurance that covers trip cancellation/interruption.**



If you cancel:

180 days or more before departure date

179 to 151 days before departure date

150 days or less before departure date

Your refund will be:

Your deposit minus \$500\*

No refund of the deposit, but any payments on the balance will be refunded

No refund available

\*Unless the deposit is transferred to a new registration for another VENT tour that will operate within the next 12 months, in which case the cancellation fee will be \$100 per person. To qualify, cancellation must occur 180 days or more before departure date; deposit transfers must be made at the time of cancellation; and one transfer per deposit.

Upon cancellation of the transportation or travel services, where you, the customer, are not at fault and have not cancelled in violation of the terms and conditions of any of the contract for transportation or travel services, all sums paid to VENT for services not received by you will be promptly refunded by VENT to you unless you otherwise advise VENT in writing. This policy does not apply to air tickets purchased through VENT or to any special arrangements, such as additional hotel nights, that fall outside the services described in the tour itinerary.

**Victor Emanuel Nature Tours is not a participant in the California Travel Consumer Restitution Fund. California law requires certain sellers of travel to have a trust account or bond. This business has a bond issued by Travelers in the amount of \$50,000. CST #2014998-50.**

**TRAVEL INSURANCE:** To safeguard against losses due to illness, accident, or other unforeseen circumstances, we strongly recommend the purchase of travel insurance as soon as possible after making a deposit. VENT has partnered with Redpoint Resolutions as our preferred travel insurance provider. Through Redpoint, we recommend **Ripcord Rescue Travel Insurance™**. Designed for all types of travelers, Ripcord is among the most highly regarded travel insurance programs available.

Critical benefits of **Ripcord Rescue Travel Insurance** include a completely integrated program with a single contact for emergency services, travel assistance, and insurance claims; **medical evacuation and rescue services** from your point of injury or illness to your hospital of choice; comprehensive travel insurance for **trip cancellation/interruption**, primary medical expense coverage, and much more. **Waiver for pre-existing conditions is available but must be purchased within 14 days of tour deposit.** Optional expanded insurance coverage is available and includes items such as security evacuation coverage in case of a natural disaster or other security events, and a "Cancel for Any Reason" clause (must be purchased within 14 days of tour deposit). Ripcord is available to U.S. and non-U.S. residents.

For a price quote, or to purchase travel insurance, please visit: [ripcordrescuetravelinsurance.com/ventbird](http://ripcordrescuetravelinsurance.com/ventbird); or click the **Ripcord Rescue Travel Insurance™** logo on our website (click Help and Trip Insurance); or call +1-415-481-0600. Pricing is based on age, trip cost, trip length, and level of coverage.

**FUEL & FUEL SURCHARGES:** In the uncertain, often volatile oil market of late, it is difficult – if not impossible – to predict fuel costs over the long term, and more specifically, at the time of operation of this departure. Our prices are based upon the prevailing fuel rates at the time of itinerary publication. While we will do everything possible to maintain our prices, if the fuel rates increase significantly, it may be necessary to institute a fuel surcharge.

**EXCHANGE RATE SURCHARGES:** In the erratic global financial markets of today, it is difficult to predict foreign currency exchange rates over the long term or at the time of operation of a tour or cruise departure. Tour prices are based upon the rate of exchange at the time of itinerary publication. If exchange rates change drastically, it may be necessary to implement a surcharge. If a surcharge is necessary, every effort will be made to minimize the amount. In many cases, these additional foreign exchange rate surcharges are passed to VENT by its vendors and suppliers.

**AIR INFORMATION:** Victor Emanuel Travel is a full-service travel agency and wholly owned subsidiary of Victor Emanuel Nature Tours (VENT). Victor Emanuel Travel will be happy to make any domestic or international air travel arrangements from your home and return. ***Please be sure to check with the VENT office prior to purchasing your air ticket to confirm that the tour is sufficiently subscribed to operate. VENT cannot be responsible for any air ticket penalties.***

**CLIMATE:** The Philippines is hot and humid year-round. The weather pattern across the archipelago is complex, but can be roughly divided into the dry season (September to May) and the wet season (June to September). There is little seasonal variation in most places with average highs and lows of around 31°C (87°F) and 24°C (76°F) respectively. Between December and May, slightly cooler and drier conditions prevail.

**CLOTHING:** Bring light-weight and predominantly cotton field clothing. **Bright colors are best avoided (remember – browns, tans and greens are less likely to startle birds and mammals). Please do not wear military style camouflage clothing.** Bring a warm sweater; a hat with a good brim to keep the sun off; a waterproof poncho, jacket or the like; a small collapsible umbrella is **essential**; and comfortable boots with rugged soles—even flat trails can become slippery when wet. You should also have relatively thick socks to cushion your feet during long walks.

Laundry service will be available at most of the hotels where we stay in the Philippines.

**SPECIAL NOTE:** Leeches can at times be a nuisance, most notably at Mount Makiling if there has been recent rain. While spraying your socks and trousers with bug-juice is some help, a pair of leech-socks is much more effective. A website that sells anti-leech socks is [www.mosquitohammock.com](http://www.mosquitohammock.com). They are based in Philadelphia.

**CURRENCY:** The currency in the Philippines is the Peso (PhP), divided into 100 Centavos. Participants are advised to carry sufficient funds in low denomination US dollars cash, which can be very useful in an emergency. Automatic teller machines are widely available.

**DOCUMENTS:** A passport valid for at least six months beyond your planned departure is required for United States and Canadian citizens to enter the Philippines. Canadian and U.S. citizens are not required to have a visa for stays under 30 days. Citizens of other countries should check with your local consulate/embassy for instructions.

**EQUIPMENT:** Please bring along your binoculars. Your tour leader will be carrying a spotting scope if circumstances provide that we might need it. You should bring all the camera equipment that you will need, as there will be photographic opportunities.

A small day pack (either waterproofed or with a strong plastic bag inside) is useful for carrying excess clothing, camera equipment, toiletries, food, and water. However, we will have regular access to our vehicle, which will be attended by a driver. Water bottles are important if you like to carry a regular supply of water.

**Other useful items include:**

1. Handy wipes and paper tissues are especially useful. All participants should carry sufficient for their personal needs for the entire tour.
2. Spare glasses or contact lenses.
3. A large handkerchief for use in bathrooms, as paper towels are often not provided.
4. Umbrella - the collapsible type is easy to carry and useful both against rain and sun.

**LUGGAGE:** When traveling within the Philippines, officially one piece of checked luggage weighing no more than 44 pounds is allowed free of charge. In addition you are allowed one piece of carry-on luggage and whatever you carry over your arm or in your hands (i.e. coat, book, purse, umbrella etc.).

**MISC:**

Electricity – the Philippines uses 220 volts, 60 Hz, AC. European and Japanese style plugs are used.

Language – Tagalog and English are the official national languages.

Time – the Philippines is 15 hours ahead of Eastern Standard Time.

Internet – Most of the hotels we will visit will have internet access.

Snacks- it is advisable to bring granola-type bars, dried fruit or other snacks. Convenience stores are not common, but they stock many snacks and other products that you will be familiar with (and some not so familiar).

Flashlight or headlamp – for night walking or blackouts

**HEALTH:** In smaller towns and rural areas, assume the water is unsafe and stick with bottled or boiled drinks. Sanitation throughout the Philippines is relatively very good compared to most tropical areas of the world. Most hot, freshly cooked food should be safe, but peel fresh fruit and raw vegetables before eating, make sure meat is cooked thoroughly, and avoid local dairy products. Be sure to bring all necessary prescription drugs, as well as aspirin, antacids, and a supply of antihistamines should you develop a cold.

No vaccinations are required; however, cholera, typhoid and tetanus should be current. Gamma globulin may be taken to prevent hepatitis. Malaria is present although scarce in the areas we visit, including the chloroquine-resistant strain. In addition to your physician, a good source of general health information for travelers is the United States Centers for Disease Control and Prevention (CDC) in Atlanta. The CDC operates a 24-hour recorded Travelers' Information Line 800-CDC-INFO (232-4636) or you can check their website at [www.cdc.gov/travel](http://www.cdc.gov/travel). Canadian citizens should check the website of the Public Health Agency of Canada: [www.canada.ca/en/public-health.html](http://www.canada.ca/en/public-health.html) (click on Travel Health).

Insects such as mosquitoes, sand-flies and leeches can be a problem. This is best dealt with by wearing long-sleeved shirts of sufficient thickness and density of weave that the “bugs” cannot bite through, and long trousers tucked into long socks. We also recommend “CUTTER” lotion in the squeeze bottle or pump-style “OFF!” If you are taking prescription medication or over-the-counter medicine, be sure to bring an ample supply that will allow you to get through the tour safely. Please consult your physician as necessary. Remember to pack all medication in your carry-on baggage, preferably in original containers or packaging. As airline baggage restrictions can change without warning, please check with your airline for procedures for packing medication.

As standard travel precautions, you should always be up to date with tetanus shots, and strongly consider inoculations against hepatitis types A and B.

**All participants should bring a good quantity of all their medical/pharmaceutical supplies, as these will be very difficult to obtain anywhere on the tour.**

**SUGGESTED READING:** A number of traditional booksellers and online stores list excellent inventories of field guides and other natural history resources that will help prepare you for this tour. We recommend [www.amazon.com](http://www.amazon.com) which has a wide selection; [www.buteobooks.com](http://www.buteobooks.com) and [www.nhbs.com](http://www.nhbs.com) which specialize in ornithology and natural history books; and [www.abebooks.com](http://www.abebooks.com) for out-of-print and hard-to-find titles.

\* **A Guide to the Birds of the Philippines** by Robert Kennedy, Pedro C. Gonzales, Edward Dickinson, Hector Miranda and T Fisher. 2000. Oxford University Press – this is the best bird field guide for the area although unfortunately now quite out of date regarding the recent splitting of many bird species.

\* **A Naturalists Guide to the Birds of the Philippines** by Maia Tanedo, Robert Hutchinson, Adrian and Trinket Constantino. 2015. John Beaufoy publishing ([www.johnbeaufoy.com](http://www.johnbeaufoy.com)) Excellent photographs of many (but not all) bird species in the Philippines. Concise and informative sections on aspects of Philippine ornithology and a handy checklist in the back section. A very useful publication.

**Philippine Birds** by J.E. DuPont. 1971. Delaware Museum of Natural History – not surprisingly, a little out of date.

**A Photographic Guide to the Birds of Southeast Asia including the Philippines and Borneo** by Morton Strange. 2003. Christopher Helm – a good reference.

For a more exhaustive bibliography, see selections in the Apa and Lonely Planet Guides.

MAP: Philippines - 1:1,500,000, Nelles series

\* Recommended to bring on tour.

**TIPPING**: Tipping (restaurant staff, porters, drivers, local guides) is included on VENT tours. However, if you feel one or both of your VENT leaders or any local guides have given you exceptional service, it is entirely appropriate to tip. We emphasize that tips are not expected and are entirely optional. Tips should be given directly to your tour leader; they should not be sent to the VENT office.

**RESPONSIBILITY**: Victor Emanuel Nature Tours, Inc. (VENT) and/or its Agents act only as agents for the passenger in regard to travel, whether by railroad, motorcar, motor-coach, boat, or airplane and assume no liability for injury, damage, loss, accident, delay, or irregularity which may be occasioned either by reason of defect in any vehicle or for any reason whatsoever, or through the acts or default of any company or person engaged in conveying the passenger or in carrying out the arrangements of the tour. VENT and its agents can accept no responsibility for losses or additional expenses due to delay or changes in air or other services, sickness, weather, strike, war, quarantine, or other causes. All such losses or expenses will have to be borne by the passenger, as tour rates provide for arrangements only for the time stated. The right is reserved to substitute hotels of similar category for those indicated and to make any changes in the itinerary where deemed necessary or caused by changes in air schedules. The right is reserved to cancel any tour prior to departure, in which case full refund will constitute full settlement to the passenger. The right is reserved to substitute leaders. When this is necessary, notification will be given to tour members. No refund will be made for any unused portion of the tour unless arrangements are made in sufficient time to avoid penalties. The prices of the tours are based on tariffs and exchange rates in effect on June 11, 2020, and are subject to adjustment in the event of any change therein. The right is reserved to decline to accept or to retain any person as a member of any tour. Baggage is at owner's risk entirely. The airlines concerned and their agents and affiliates are not to be held responsible for any act, omission, or event during the time passengers are not on board their aircraft. The passenger ticket in use by said airlines, when issued, shall constitute the sole contract between the airlines and the purchaser of these tickets and/or passenger. The services of any I.A.T.A.N. carrier may be used for these tours, and transportation within the United States may be provided by any member carrier of the Airline Reporting Corporation.